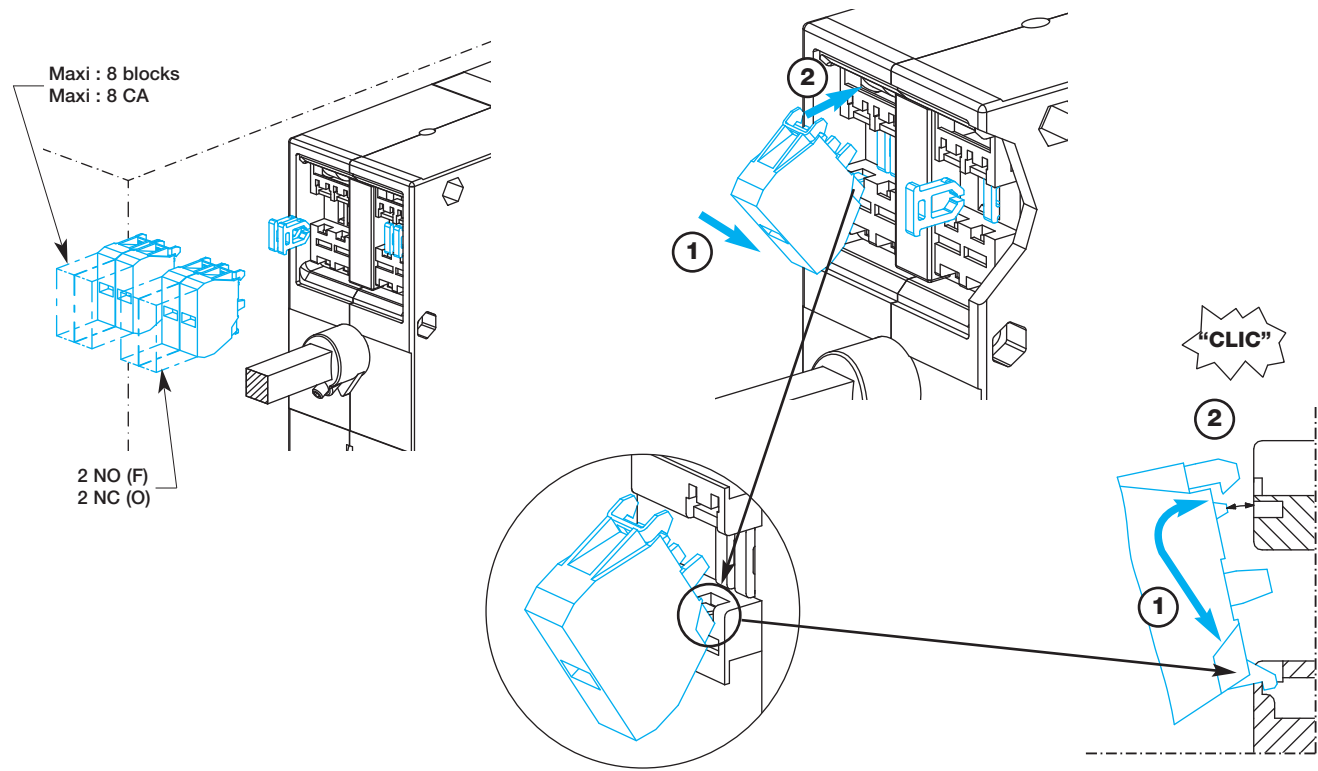
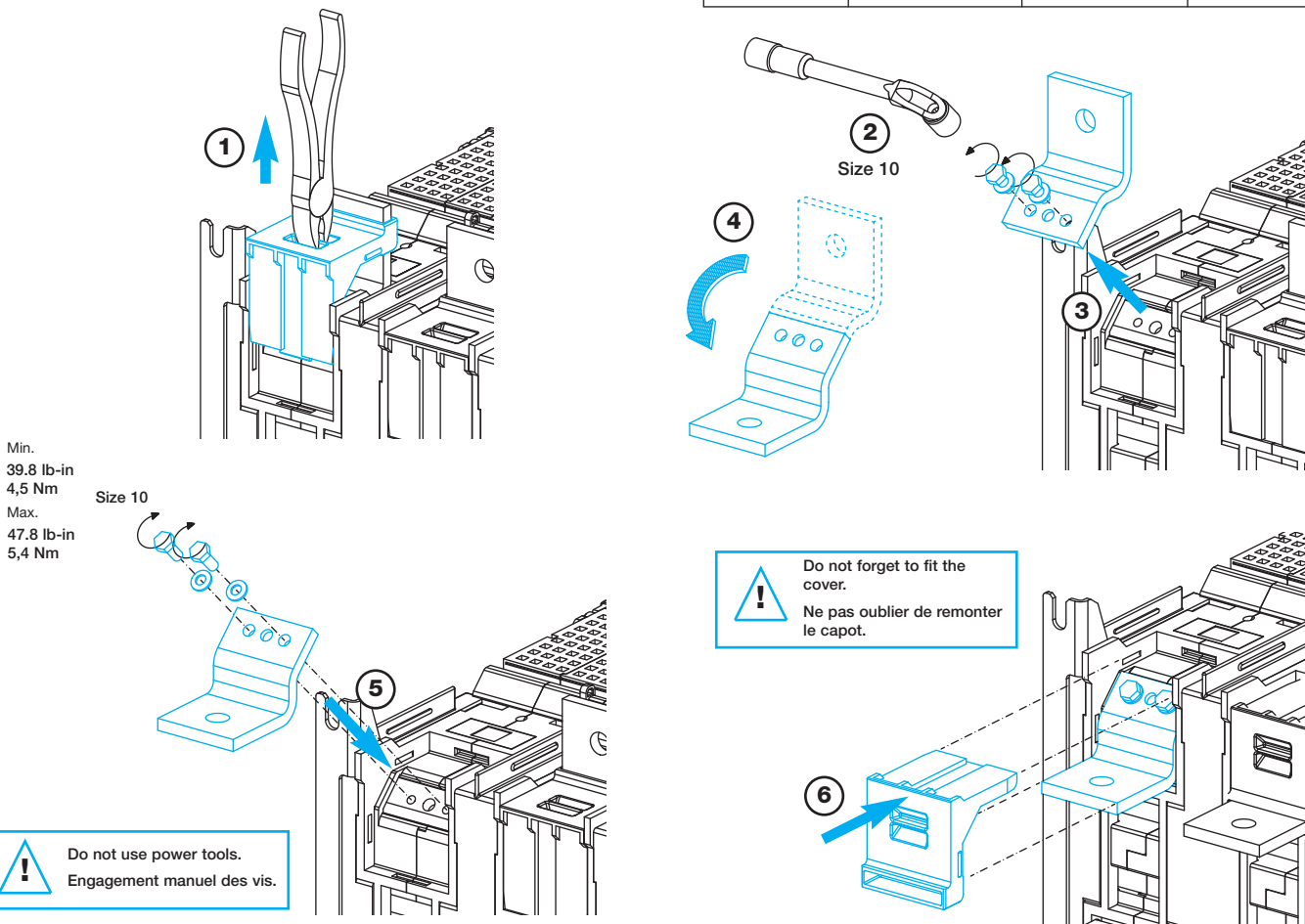


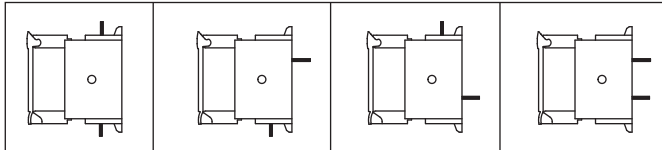
Pre-break and signalisation mounting
Montage des contacts auxiliaires



Configurable Power terminals
Réversibilité des plages



Possible terminal configurations
Configuration des plages



NMO 532385-B

C	AEF	PRF	23-04-08
	ETABLI Issued	VERIFIE Checked	DATE Date

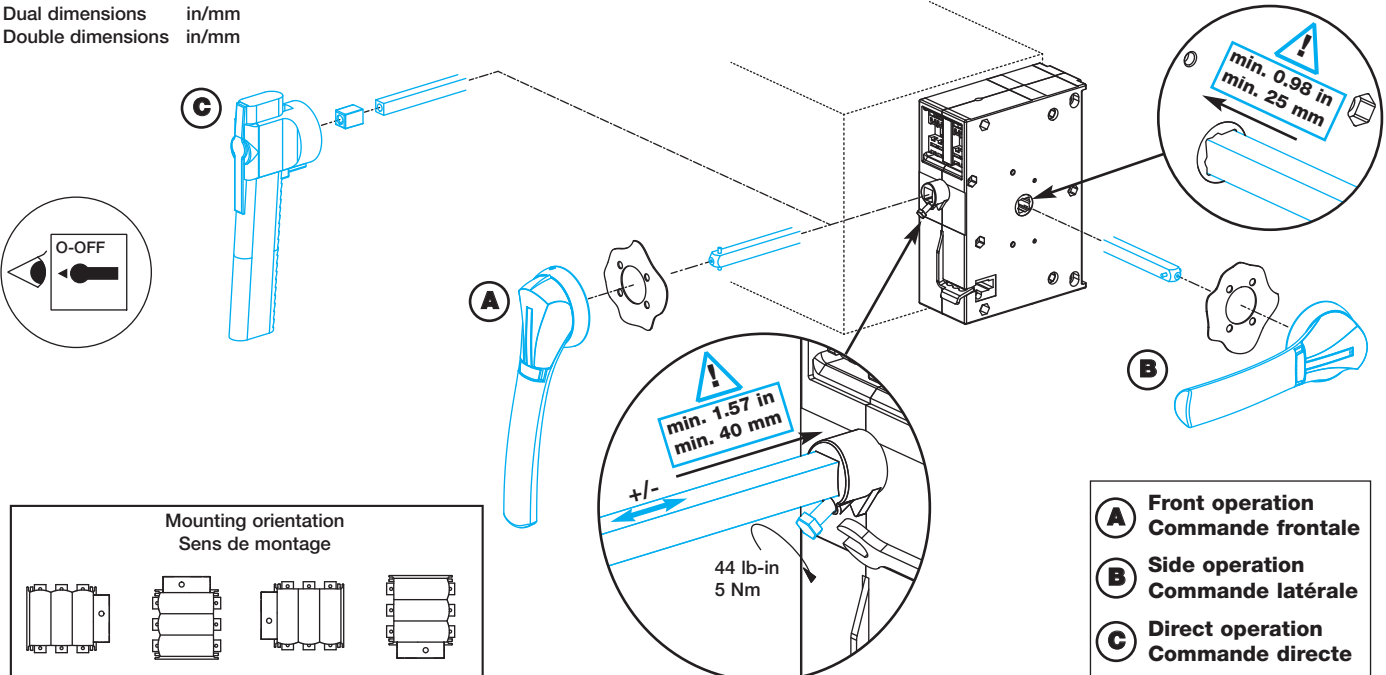
HAZARDOUS VOLTAGE

- This equipment must be installed and serviced only by qualified electrical personnel.
 - Turn off all power supplying this equipment before working on or inside equipment.
 - Always use a properly rated voltage sensing device to confirm power is off.
 - Replace all devices, doors, and covers before turning on power to this equipment.
- Failure to follow these instructions will result in death or serious injury.**

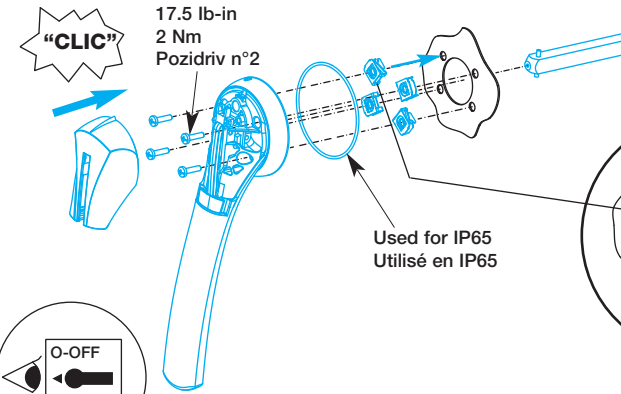
TENSION DANGEREUSE

- L'installation et l'entretien de cet appareil ne doivent être effectués que par du personnel qualifié.
 - Coupez l'alimentation de cet appareil avant d'y travailler.
 - Utilisez toujours un dispositif de détection de tension à valeur nominale approprié pour confirmer que toute alimentation est coupée.
 - Remplacez tous les dispositifs, les portes et les couvercles avant de mettre cet appareil sous tension.
- Si ces précautions ne sont pas respectées, cela entraînera la mort ou des blessures graves**

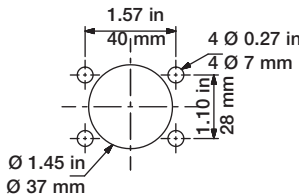
Dual dimensions in/mm
Double dimensions in/mm



**Front operation
Commande frontale**



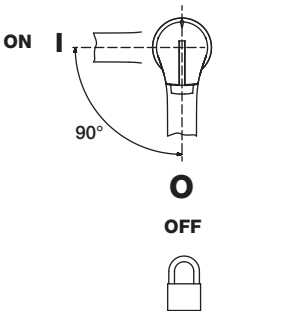
Door drilling
Perçage de porte



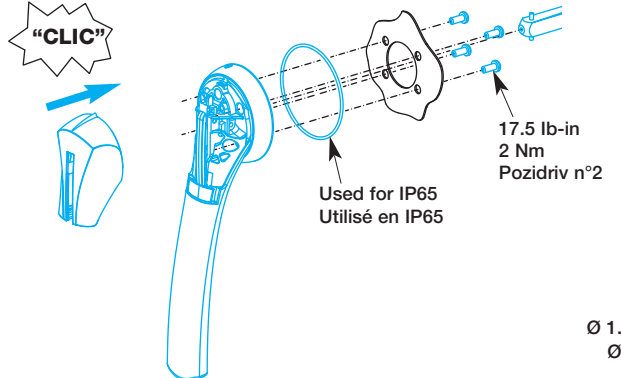
Front and side operation.
Commande frontale et latérale.

0.90 ± 0.079 in
23 ± 2 mm

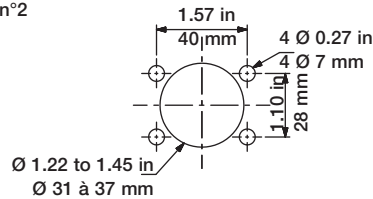
Padlocking position
Position cadenasage



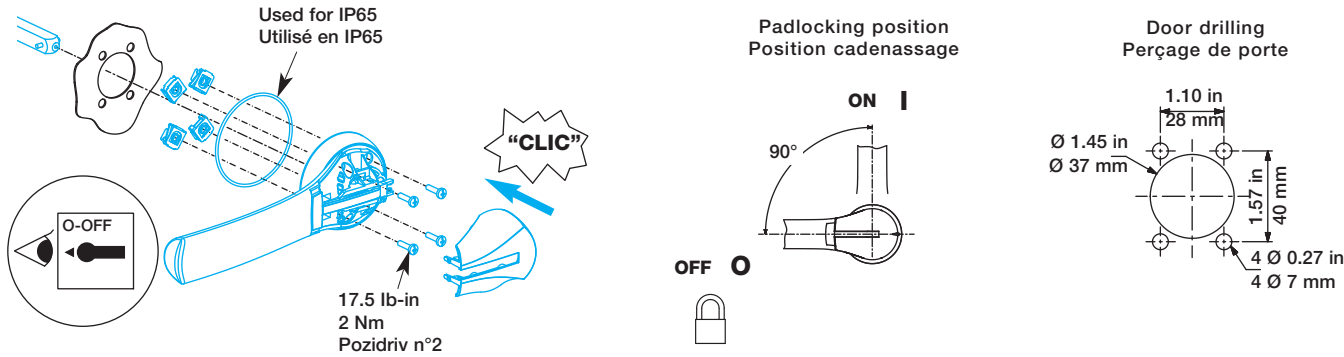
OU / OR



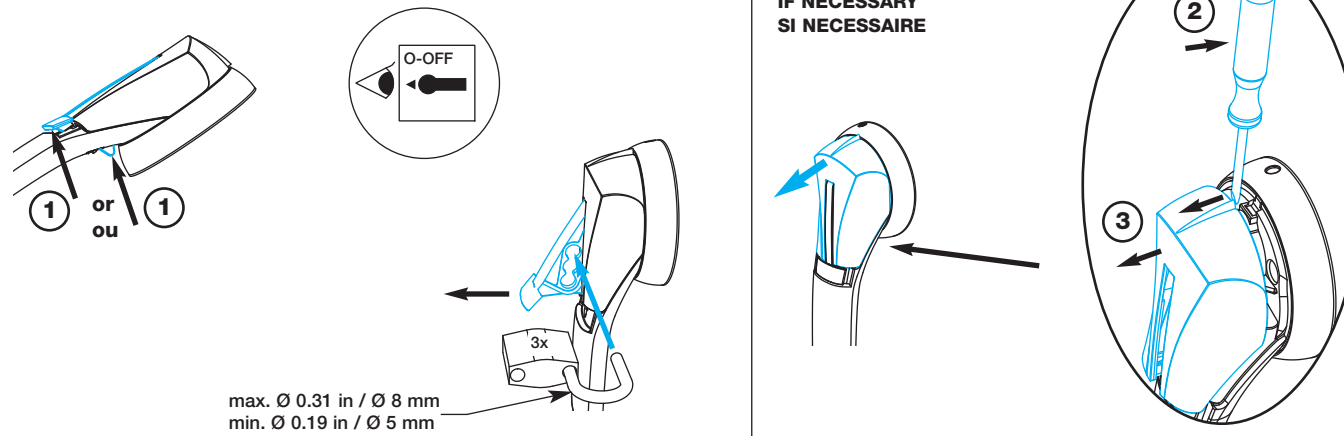
Door drilling
Perçage de porte



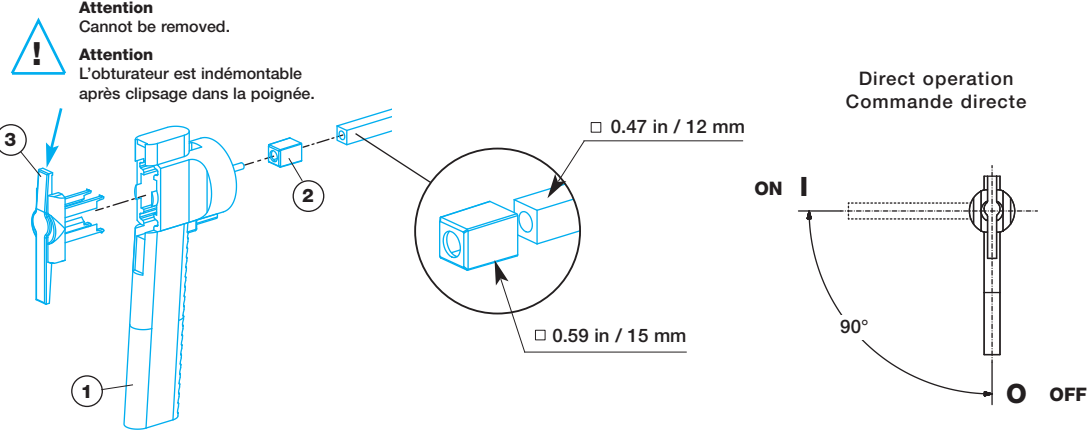
B Side operation
Commande latérale



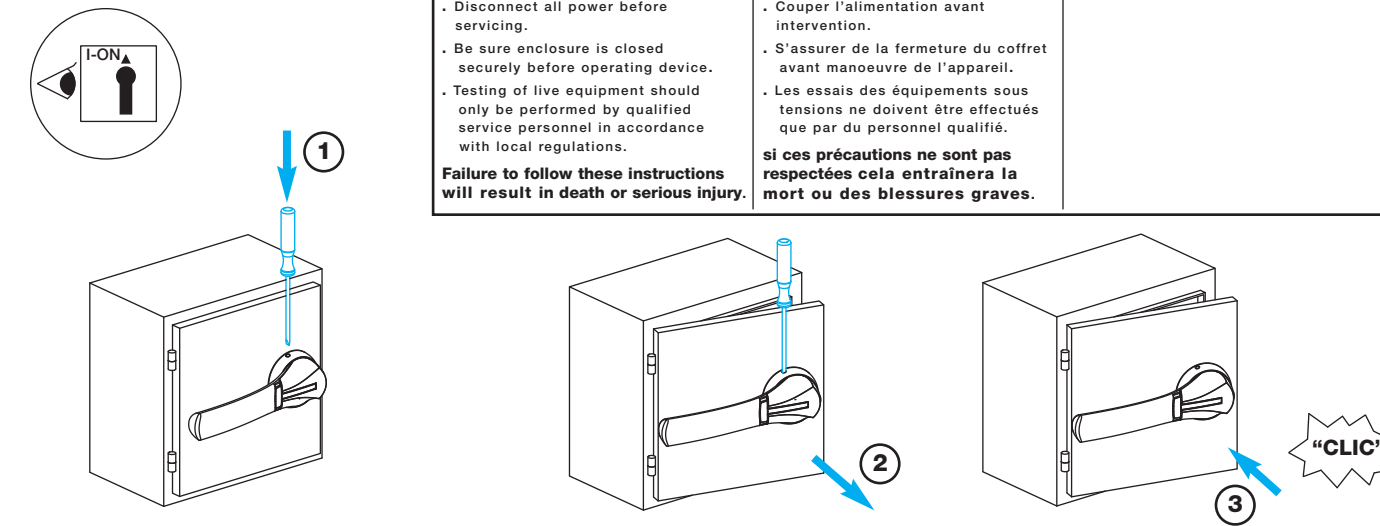
Padlocking the handle - Front and Side operation
Cadenassage de la poignée - Commande frontale et latérale



C Direct operation
Commande directe

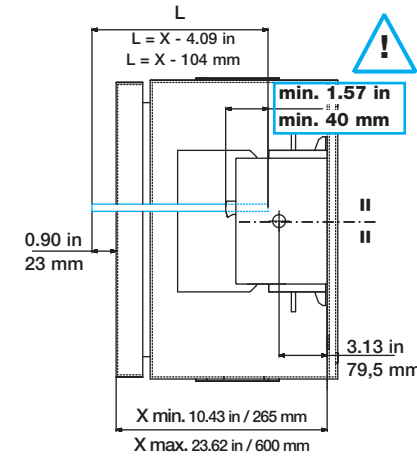


Defeating the interlock in ON position
Déverrouillage de porte en position I

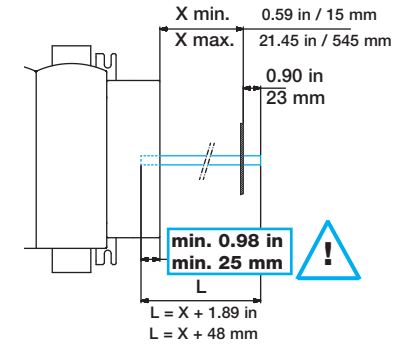


Shaft length
Longueur d'axe

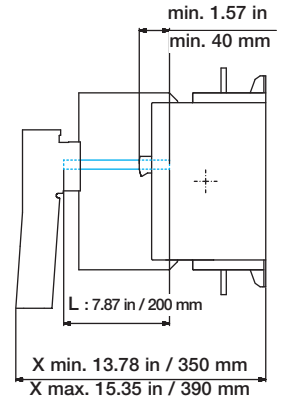
A Front operation
Commande frontale



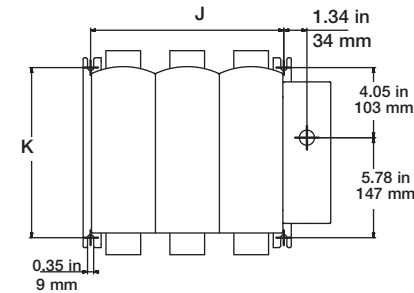
B Side operation
Commande latérale



C Direct operation
Commande directe



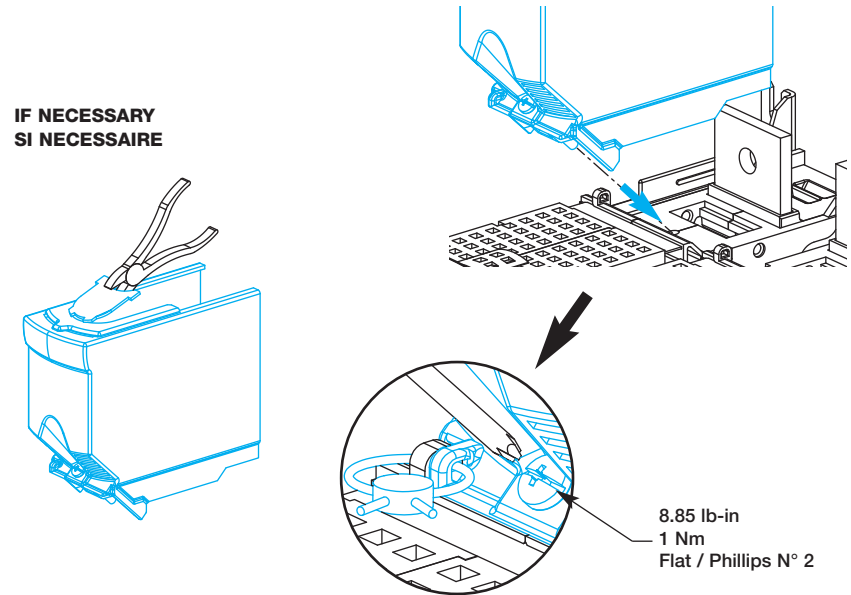
Fixing
Fixation



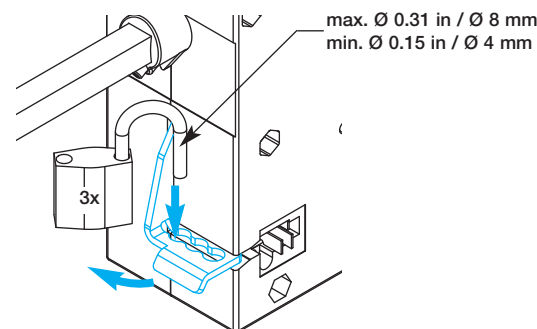
	J		K	
	in	mm	in	mm
3 P	11.18	284	9.84	250
4 P	14.88	378		

Terminal shroud mounting
Montage des cache-bornes

IF NECESSARY
SI NECESSAIRE



Shaft padlocking
Cadenassage de l'axe



Remote padlocking indication
Signalisation déportée de cadenasage

