



QUICK START EN 800 A - 3200 A

# ATyS / ATyS r

Motorised Source Changeover Switch

## Preliminary operations

Check the following upon delivery and after removal of the packaging:

- Packaging and contents are in good condition.
- The product reference corresponds to the order.
- Contents should include:
  - Qty 1 x ATyS / ATyS r
  - Qty 1 x Emergency handle and fixing clip
  - Quick Start instruction sheet

## Warning

**⚠ Risk of electrocution, burns or injury to persons and / or damage to equipment.**  
This Quick Start is intended for personnel trained in the installation and commissioning of this product. For further details refer to the product instruction manual available on the SOCOMEC website.

- This product must always be installed and commissioned by qualified and approved personnel.
- Maintenance and servicing operations should be performed by trained and authorised personnel.
- Do not handle any control or power cables connected to the product when voltage may be, or may become present on the product, directly through the mains or indirectly through external circuits.
- Always use an appropriate voltage detection device to confirm the absence of voltage.
- Ensure that no metal objects are allowed to fall in the cabinet (risk of electrical arcing).

- For 800 - 3200 A (Uimp = 12 kV). Terminations must respect a minimum of 14 mm clearance from live parts to parts intended to be earthed and between poles.

Failure to observe good engineering practises as well as to follow these safety instructions may expose the user and others to serious injury or death.

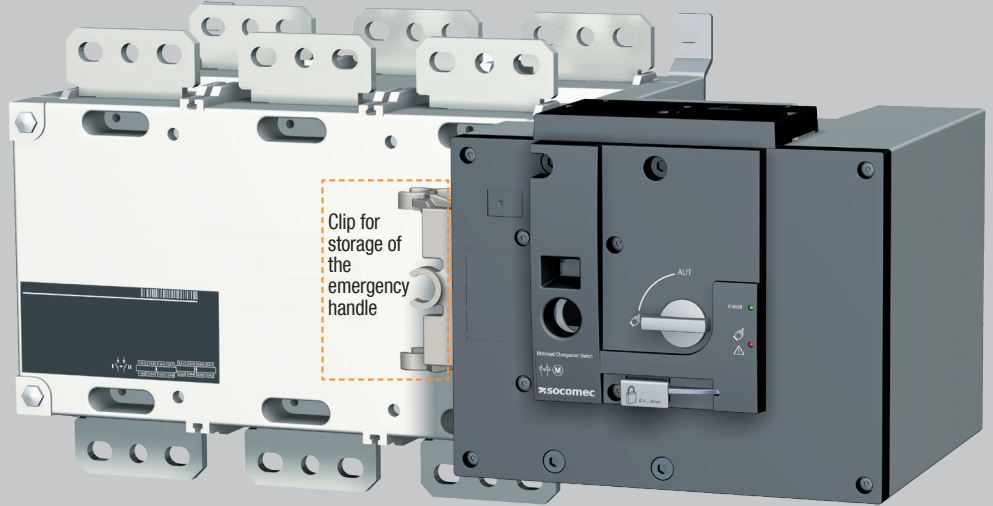
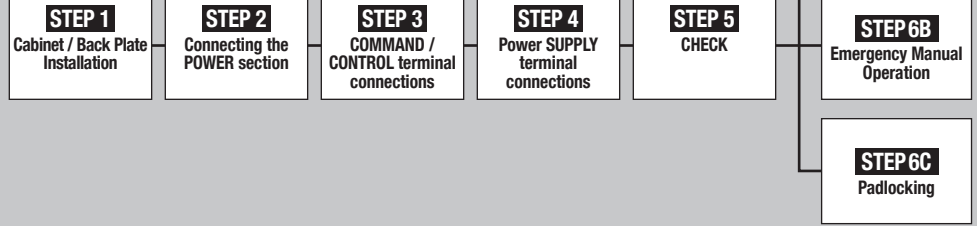
**⚠ Risk of damaging the device**  
In case the product is dropped or damaged in any way it is recommended to replace the complete product.

## Accessories

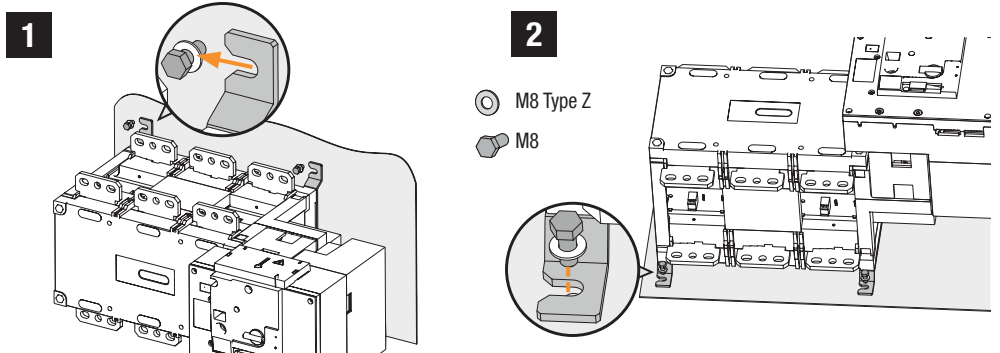
- Bridging bars and connection kits.
- Control voltage transformer (400 VAC → 230 VAC).
- DC power supply (12/24 VDC → 230 VAC).
- Phase barriers.
- Terminal shrouds.
- Terminal screens.
- Auxiliary contacts (Additional).
- Padlocking in 3 positions (I - 0 - II).
- Lockout accessories (RONIS - EL 11 AP).
- Door escutcheon frame.
- ATS controller ATyS C25.
- ATS controller ATyS C55 or C65.

For further details refer to the product instruction manual under chapter "Spares and Accessories"

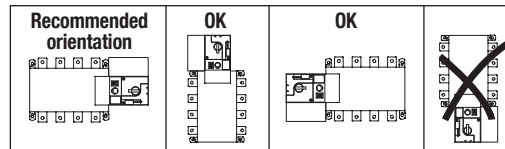
## Installation and Commissioning



## STEP 1 Installation



**⚠ Caution:** ensure that the product is installed on a flat rigid surface.



## STEP 2 Power Terminal Connections

To be connected using terminal lugs, rigid or flexible busbars.

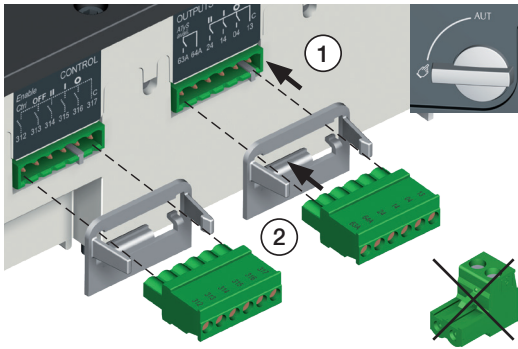
	FRAME B6			FRAME B7		FRAME B8	
	800 A	1000 A	1250 A	1600 A	2000 A	2500 A	3200 A
Minimum cable section Cu (mm <sup>2</sup> )	2x185	-	-	-	-	-	-
Recommended cable section Cu (mm <sup>2</sup> )	2x50x5	2x63x5	2x63x7	2x100x5	3x100x5	2x100x10	3x100x10
Maximum Cu cable cross-section (mm <sup>2</sup> )	4x185	4x185	4x185	6x185	-	-	-
Maximum Cu busbar width (mm)	63	63	63	100	100	100	100
Type of screw	M8	M8	M10	M12	M12	M12	M12
Recommended tightening torque (lb.in/N.m)	73.46/8.3	73.46/8.3	177.02/20	354.04/40	354.04/40	354.04/40	354.04/40
Maximum tightening torque (lb.in/N.m)	115.06/13	115.06/13	230.13/26	398.30/45	398.30/45	398.30/45	398.30/45



[www.socomec.com](http://www.socomec.com)  
To download, brochures, catalogues and technical manuals:  
[https://www.socomec.com/operating-instructions\\_en.html](https://www.socomec.com/operating-instructions_en.html)

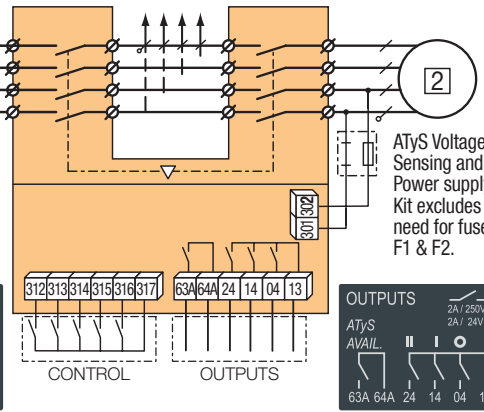
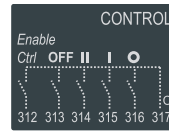
### STEP 3 CONTROL / COMMAND Terminals

Ensure that the product is in Manual Mode.



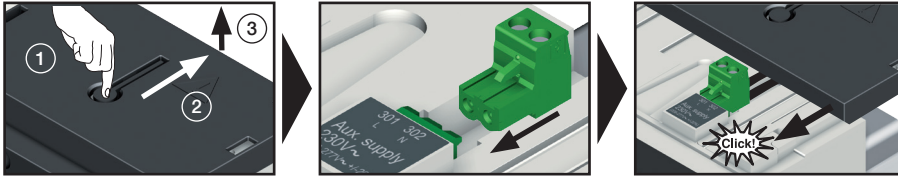
Connect the product with a cable of section of 1,5 to 2,5 mm<sup>2</sup>.

Screw M3 - Tightening torque:  
min.: 0.5 Nm - max.: 0.6 Nm  
min.: 4.43 lbin - max.: 5.31 lbin



### STEP 4 Power Supply Terminal

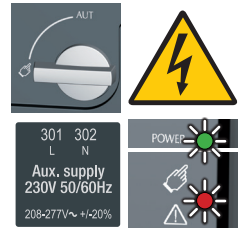
Remove the Top cover to access and connect the terminal - Replace the cover before putting in service.



### STEP 5 Check

Whilst in manual mode, check the wiring and if ok power up the product.

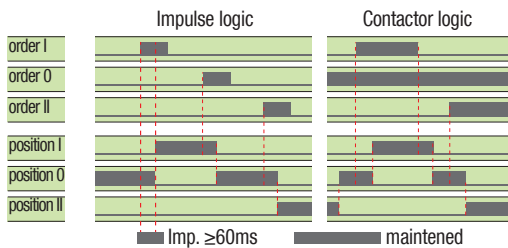
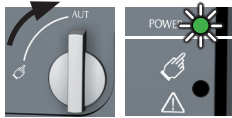
LED "Power" Green: ON  
LED Manual/Default Red (Product not Available): ON



### STEP 6A Automatic Operation

Ensure that the emergency handle is not inserted in the product and turn the mode selector to the AUT position.

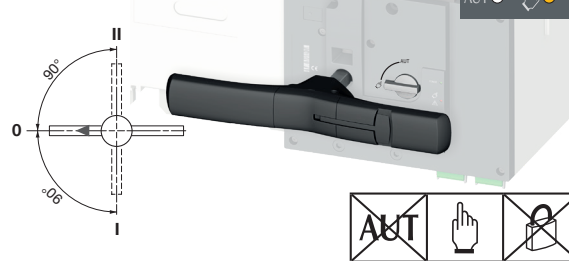
LED "Power" Green: ON  
LED Manuel/Default: OFF



To enable control, close contact 312 with 317.  
To force the product to 0 position/OFF bridge the contact 313 with 317. For contactor logic bridge contact 316 with 317. To operate: close the contact corresponding to the desired position.



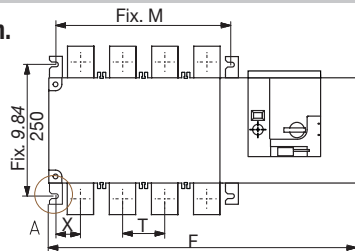
### STEP 6B Manual Operation



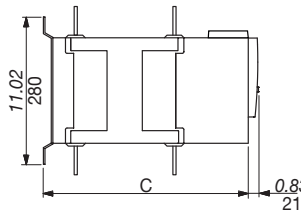
### STEP 6C Padlocking Mode (as standard: in position 0)



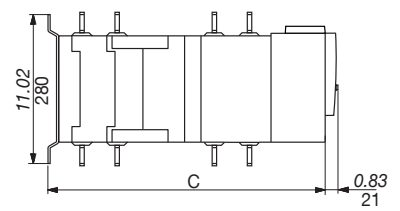
### Dimensions in./mm.



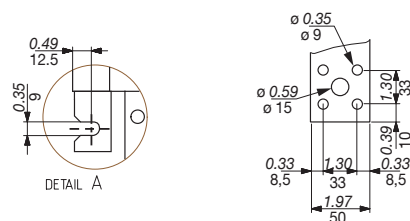
800 A to 1600 A



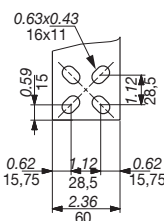
2000 A to 3200 A



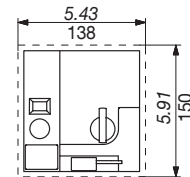
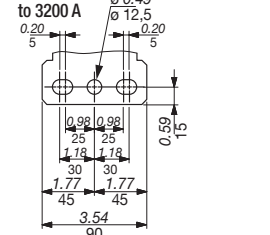
800 A to 1000 A



1250 A



1600 A to 3200 A



	800 A		1000 A		1250 A		1600 A		2000 A		2500 A		3200 A	
	3 P	4 P	3 P	4 P	3 P	4 P	3 P	4 P	3 P	4 P	3 P	4 P	3 P	4 P
	in	mm	in	mm	in	mm	in	mm	in	mm	in	mm	in	mm
<b>C</b>	15.39	391	15.39	391	15.39	391	15.39	391	523	20.59	523	20.59	523	20.59
<b>F</b>	19.84	504	22.99	584	19.84	504	22.99	584	23.46	596	28.19	716	23.46	596
<b>M</b>	10.04	255	13.19	335	10.04	255	13.19	335	13.66	347	18.39	467	13.66	347
<b>T</b>	3.15	80	3.15	80	3.15	80	3.15	80	4.72	120	4.72	120	4.72	120
<b>X</b>	1.87	47.5	1.87	47.5	1.87	47.5	1.87	47.5	2.09	53	2.09	53	2.11	53.5