

# DC analogue ammeters

## Indicators and transducers



amper\_028.eps

### Compliance with standards

- > IEC 60051-1
- > IEC 60414
- > NF EN 60051-1
- > DIN 43780
- > NF C 42-010
- > VDE 0410
- > BS 5448
- > BS 89



### Function

SOCOME **magnetolectric ammeters** measure the direct current of any electrical circuit. They are embedded in the front panel of cabinets, enclosures or other equipment.

### Characteristics

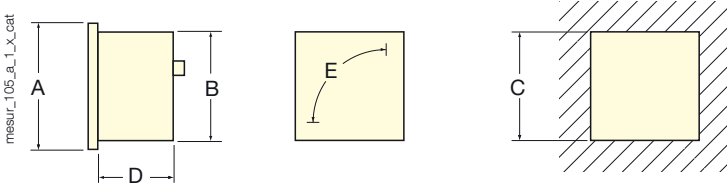
- Pointer deflection: 90°.
- Insulating voltage: 660 V.
- Dielectric quality 2 kV - 50 Hz - 1 mn.
- Consumption: connection on shunt 100 mV = 1 mA.
- Internal resistance: 1000 Ω/V.
- Connection: screw or fast-on lugs.
- Use on 100 mV shunt: pre-calibrated for 2.5 mm<sup>2</sup> connection over a distance between the shunt and the 0.5 to 2.5 m indicator.
- Interchangeable guided dial (needle protection).

### Composition of the range

Case	DIN 48-72-96		ROTEX 72	
	90°		90°	
Pointer deflection	90°		90°	
Connection	direct	On shunt 100 mV	direct	On shunt 100 mV
<b>Rating</b>				
0 - 100 µA	•			
0 - 10 A	•	•	•	•
0 - 15 A	•		•	
0 - 25 A	•	•	•	•
0 - 40 A		•		•
0 - 50 A	•			
0 - 100 - 600 A		•		•

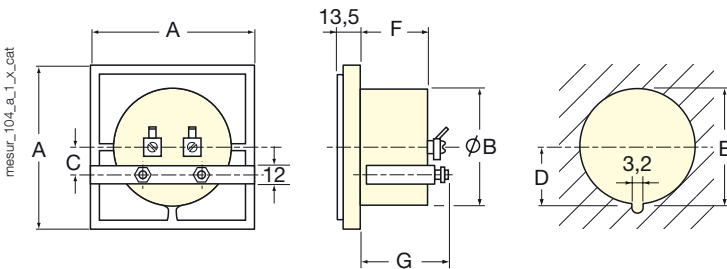
## Case

### DIN



Pointer deflection: 90°				
A	B	C	D	E
48 x 48	44.5 x 44.5	45 <sup>+0.6</sup>	59	38
72 x 72	66.5 x 66.5	68 <sup>-0.7</sup>	58	65
96 x 96	89 x 89	92 <sup>-0.8</sup>	58	100

### ROTEX



Pointer deflection: 90°						
A	B	C	D	E	F	G
72 x 72	54.5	11	28.5	56 <sup>±0.5</sup>	34.5	50.8
96 x 96	68	21.6	35.5	70 <sup>±0.5</sup>	34.5	50.8

## References

Direct connection				
	DIN 48x48 D48C90-A	DIN 72x72 D72C90-A	DIN 96x96 D96C90-A	ROTEX 72x72 R72C90-A
Rating	Reference	Reference	Reference	Reference
0 - 100 µA	192E 1201			
0 - 10 A	192E 1227	192E 1327	192E 1427	192F 1327
0 - 15 A		192E 1361		192F 1328
0 - 25 A	192E 1229			192F 1329
0 - 50 A		192E 1365		

Connection on shunt 100 mV <sup>(1)</sup>				
	DIN 48x48 D48C90-A	DIN 72x72 D72C90-A	DIN 96x96 D96C90-A	ROTEX 72x72 R72C90-A
Rating	Reference	Reference	Reference	Reference
0 - 10 A		192E 3327	192E 4427	192F 3327
0 - 25 A		192E 3329	192E 4429	192F 3329
0 - 40 A	192E 2230	192E 3330		
0 - 60 A	192E 2231		192E 4431	
0 - 100 A	192E 2232	192E 3332	192E 4432	
0 - 150 A	192E 2233		192E 4433	
0 - 250 A	192E 2234		192E 4434	
0 - 400 A			192E 4435	
0 - 600 A				192F 3336

(1) To order 'measuring shunts'

voir catalogue général.

## Accessories

	DIN 48x48 D48A90-A	DIN 72x72 D72A90-A	DIN 96x96 D96A90-A	ROTEX 72x72 R72A90-A
	Reference	Reference	Reference	Reference
Terminal protection cover		192Z 1000	192Z 1011	
2 safety caps	192Z 1016	192Z 1016	192Z 1016	192Z 1016
Mounting bracket and screws	179Z 5000	179Z 5010	179Z 5010	179Z 5020
Gasket	192Z 0007	192Z 0008	192Z 0009	192Z 0011
Replacement glass	179Z 2000	179Z 2010	179Z 2020	179Z 2030